

How can I connect all of our LANs within our tight budget?

BellSouth® Metro Ethernet Service provides a high-performance connection with a low learning cost.

At a Glance

- Cost-effective, high-bandwidth connectivity
- Familiar protocol
- Flexible, scalable metropolitan networks
- BellSouth service and reliability

Do you operate multiple sites in a metropolitan area? You know that high-speed connectivity of Local Area Networks (LANs) at each location can give you powerful cost and productivity benefits. What's the most cost-effective way to make those connections?

BellSouth Metro Ethernet Service lets you access large volumes of data and run bandwidth-intensive applications over a Metropolitan Area Network (MAN) – while minimizing added technology and learning costs.

Metro Ethernet brings new capabilities to a familiar technology

Until recently, the capacity limitations of conventional Ethernet discouraged its use for connecting multiple sites. Bandwidth needs forced system designers to turn to less familiar – and more costly – protocols, such as frame relay or Asynchronous Transfer Mode (ATM).

Compared to familiar Ethernet applications, frame relay and ATM demand training and expertise that increase the cost of implementation and operation. They also require additional equipment that adds to initial costs and on-going maintenance.

BellSouth® Metro Ethernet Service now offers bandwidth up to 1,000 Mbps, committed bandwidth features, prioritization, forwarding or even a full duplex 10 Mbps connection. With BellSouth Metro Ethernet Service, you can obtain cost-effective, high-capacity connections among multiple LAN sites in a metropolitan area. The result: lower training costs, lower operational costs and simplified change and growth in your network operations – all with BellSouth reliability and quality of service.



Simple, low-cost migration protects tight budgets

Metro Ethernet lets you upgrade to an extremely fast network without the substantial costs of new equipment or training on a different networking technology.

Because most enterprises currently use Ethernet in their LAN environments, Metro Ethernet interconnections require no major network changes. Metro Ethernet uses simple, cost-effective extensions of familiar Ethernet LAN technology and integrates seamlessly with existing Ethernet and Fast Ethernet networks.

You can often use existing CPE with only the addition of a card or software upgrade. Metro Ethernet network management and troubleshooting tools are a natural complement to current Ethernet support skills, so Metro Ethernet requires only incremental training, not wholesale adoption of new concepts.

Metro Ethernet uses the same protocols and standards as 10 Mbps Ethernet and 100 Mbps Fast Ethernet and complies with IEEE 802.3z frame format, full duplex operation and flow control methods.

How can I connect all of our LANs within our tight budget?

BellSouth® Metro Ethernet Service provides a high-performance connection with a low learning cost.



Point-to-point Metro Ethernet delivers direct connections between two LANs.

Take the next step with BellSouth metro area networking

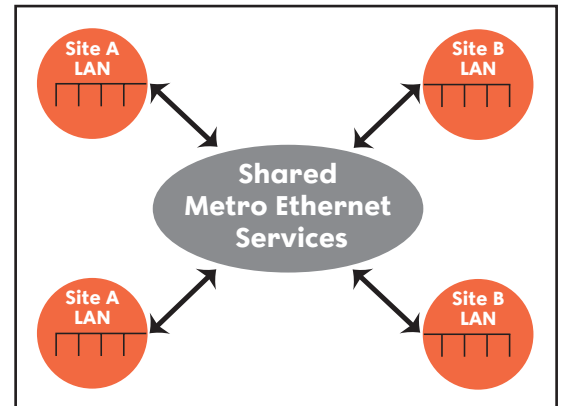
Metro Ethernet is the next step in the evolution of BellSouth® Optical Services. An extension of existing Ethernet, Fast Ethernet and Gigabit Ethernet, Metro Ethernet is a BellSouth® Optical Service.

Flexible, scalable network solutions meet changing needs

BellSouth Metro Ethernet Service uses BellSouth's reliable optical network to provide configuration flexibility that meets your business needs.

- Point-to-point service can link two locations directly for maximum security
- Shared or switched Metro Ethernet Service uses shared facilities to reduce costs

Both point-to-point and switched Metro Ethernet are available with full 24x7 service monitoring and management. Scalable solutions with capacities up to 1 Gbps and beyond enable today's Metro Ethernet network investment to continue to support your evolving applications.



Shared Metro Ethernet uses common resources to reduce costs.

BellSouth quality and reliability deliver business assurance

BellSouth is your logical choice for more secure, reliable high-speed Ethernet interconnections. Because of our extensive experience with NMLI, the initial version of Ethernet access services, we offer industry-leading expertise in Ethernet-based connectivity. You benefit from BellSouth's quality of service and convenience for integrated solutions that deliver business assurance.

For more information regarding BellSouth® Metro Ethernet Service, please contact your BellSouth account representative, or visit us online at: www.bellsouth.com/business

All trademarks contained herein are the property of BellSouth Intellectual Property Corporation.

©2003 BellSouth Corporation.
10/03 BB1211

 **BELLSOUTH**
Listening. Answering.™